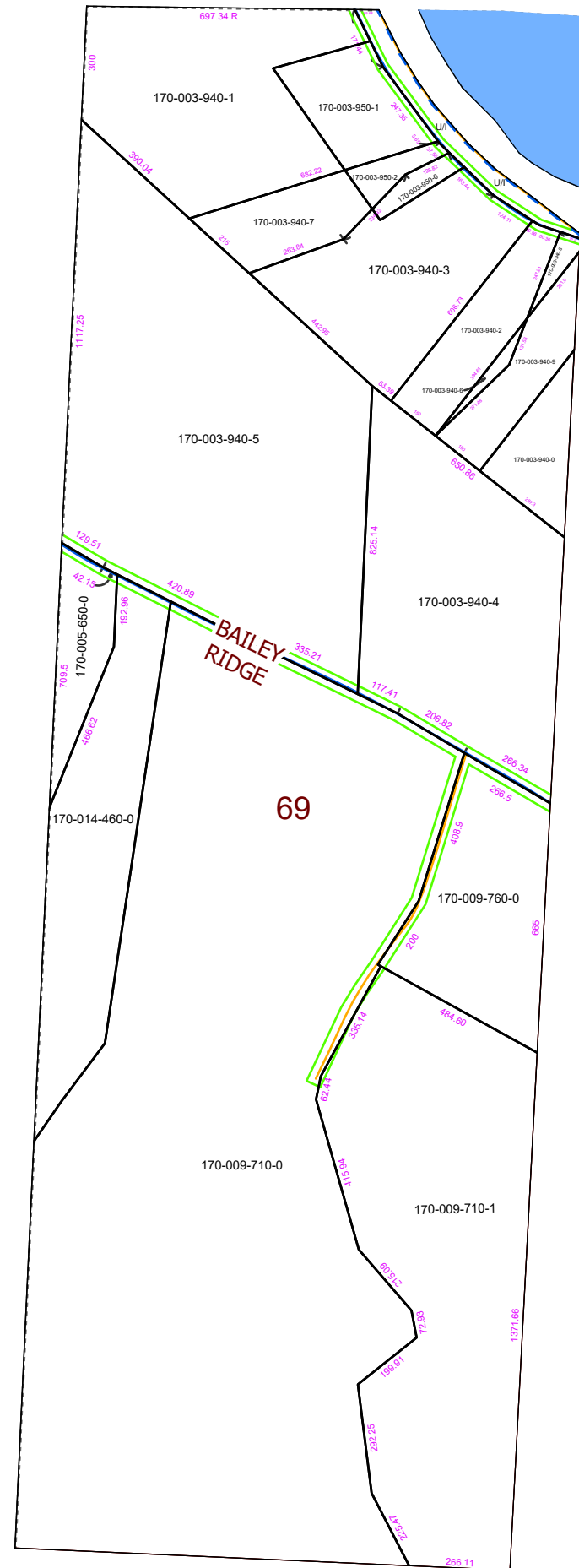


# MORGAN COUNTY, OHIO



## WINDSOR TWP. FRAC. 69, T-9, R-11, OHIO CO. PURCHASE

PIN	Owner	LegalDescr	VOL	PAGE
U/I				
170-014-460-0	BERINGO KEITH A & LINDA	R11 T09 S00 FR 69	OR235	3163
170-005-650-0	BERINGO KEITH A & LINDA	R11 T09 S00 FR 69	OR235	3163
170-003-950-0	BOUVIER LOUIS S & ROBERTA L	R11 T09 S00 FR 69	OR230	3081
170-003-940-9	BOUVIER LOUIS S & ROBERTA L	R11 T09 S00 FR 69	OR232	1059
170-003-940-8	BOUVIER LOUIS S & ROBERTA L	R11 T09 S00 FR 69	OR232	1059
170-003-940-6	BOUVIER LOUIS S & ROBERTA L	R11 T09 S00 SD 15	OR230	3081
170-003-940-2	BOUVIER LOUIS S & ROBERTA L	R11 T09 S00 FR 69	OR230	3081
170-003-940-5	EVANS JOANNE J TOD-ROBERT ADRIAN PHILLIP	R11 T09 S00 FR 69	OR226	2710
170-003-940-3	FEDERAL NATIONAL MORTGAGE ASSOCIATION	R11 T09 S00 FR 69	OR230	3081
170-009-760-0	GIFFORD ANDREW C & ISAIAH GIFFORD ETAL	R11 T09 S00 FR 69	OR232	4685
170-009-710-1	GIFFORD ANDREW CURTIS	R09 T11 SD20	OR232	2347
170-009-710-0	MILLER DONALD R ETAL	R11 T09 S00 FR 69	OR233	2076
170-003-940-4	MORGAN WILLIAM D & KAREN J	R11 T09 S00 SD 13	OR229	515
170-003-940-0	NEWTON RODNEY	R11 T09 S00 FR 69	OR166	137
170-003-950-2	THEISS KERRI A & KEVIN M	R11 T09 S00 SD 16	OR231	3455
170-003-950-1	THEISS KERRI A & KEVIN M	R11 T09 S00 SD 10	OR231	3455
170-003-940-7	THEISS KERRI A & KEVIN M	R11 T09 S00 SD 17	OR231	3455
170-003-940-1	THEISS KERRI A & KEVIN M	R11 T09 S00 SD 9 FR	OR231	3455

**Boundaries**

Type

- County
- Hidden
- Hydro
- Parcel
- ROW
- Section
- Lot

..... <all other values>



08/10/2020

